



ESTATE AGENTS

23 Albany Court, Robertson Terrace, Hastings, TN34 1JH

Web: www.pcmestateagents.co.uk
Tel: 01424 839111

Price £183,000

***** CASH BUYERS ONLY - APPROXIMATELY 35 YEARS REMAINING ON LEASE*****

PCM Estate Agents are delighted to present to the market an opportunity to secure this **SECOND FLOOR PURPOSE BUILT TWO DOUBLE BEDROOM SEA FRONT APARTMENT** with **BALCONY** and splendid **SEA VIEWS**.

The property benefits from having gas fired central heating and double glazing and offers a central position to Hastings, just a short walk to the town centre and **MAINLINE RAILWAY STATION**.

Inside the property offers well appointed accommodation comprising entrance hall with ample storage cupboards, **LOUNGE PROVIDES ACCESS TO BALCONY** with lovely views, **NEWLY FITTED KITCHEN**, **TWO DOUBLE BEDROOMS**, **NEWLY FITTED SHOWER ROOM** and a separate wc.

Please call the owners agents now to book your viewing to avoid disappointment.

COMMUNAL FRONT DOOR

Opening to:

COMMUNAL ENTRANCE HALL

Stairs and lift rising to Second Floor. Private front door opening to:

PRIVATE ENTRANCE HALL

Wall mounted thermostat control for central heating, radiator, two storage cupboards, wall mounted entry phone system.

LOUNGE

13'9 x 12' (4.19m x 3.66m)

Wood laminate flooring, radiator, coving to ceiling, television point, double glazed window and door to front aspect opening up onto balcony and allowing for outstanding coastal views and views to Hastings Pier.

BALCONY

Ample space for outdoor table and chairs, tiled floor, stunning views out to sea with views of the pier.

KITCHEN

11'5 x 9'1 (3.48m x 2.77m)

Newly fitted with a matching range of high gloss eye and base level cupboards and drawers fitted with soft close hinges and having complimentary marble effect worksurfaces over, tiled splashbacks, four ring induction hob, waist level oven, integrated microwave/combination over, sunken Franke one & ½ bowl stainless steel sink with mixer tap and moulded drainer into the worktop, breakfast bar, shelving area, wall mounted cupboard concealed boiler, additional storage space, integrated washing machine, with matching cupboard door, tall fridge freezer, double glazed window to rear aspect.

BEDROOM ONE

16'6 x 11'7 (5.03m x 3.53m)

Coved ceiling, radiator, built in wardrobe, wood laminate flooring, two tilt and turn double glazed windows (fitted in October 2025) to front aspect with lovely views extending over to the sea and Hastings Pier,

BEDROOM TWO

9'4 x 9'3 (2.84m x 2.82m)

Radiator, built in cupboard, wood laminate flooring, double glazed window to rear aspect.

SHOWER ROOM

Newly fitted with walk in shower unit having electric shower, wall mounted wash hand basin with mixer tap and storage below, radiator, part tiled walls, extractor fan.

SEPARATE WC

Low level wc, part tiled walls, tiled flooring, double glazed tilt and turn window (fitted in 2024) with obscured glass to rear aspect.

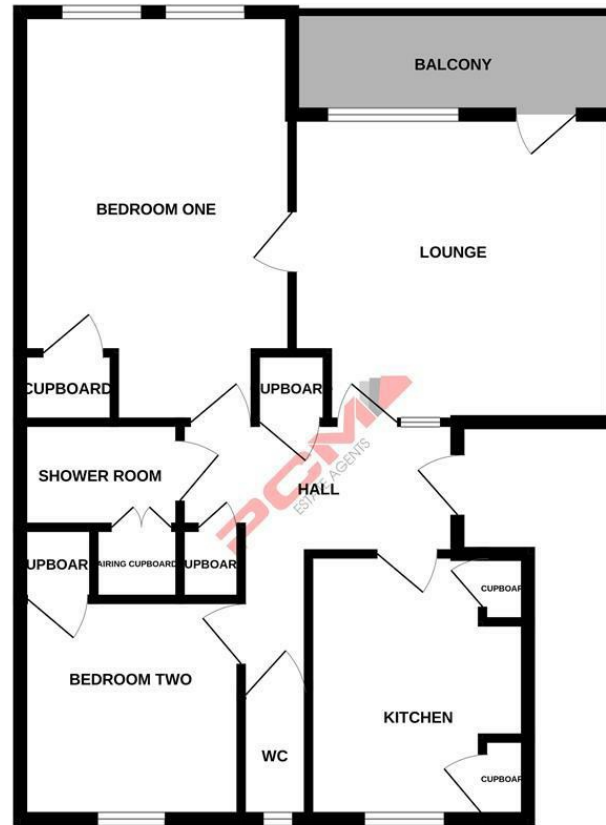
TENURE

We have been advised by the vendor of the following -
LEASE - Approx. 35 years remaining
SERVICE CHARGE - Approximately £2000 per annum.
No pets allowed

Council Tax Band: B



GROUND FLOOR



Whilst every attempt has been made to ensure the accuracy of the floorplan contained here, measurements of doors, windows, rooms and any other items are approximate and no responsibility is taken for any error, omission or mis-statement. This plan is for illustrative purposes only and should be used as such by any prospective purchaser. The services, systems and appliances shown have not been tested and no guarantee as to their operability or efficiency can be given.
Made with Metropix ©2022

Energy Efficiency Rating		Current	Potential
Very energy efficient - lower running costs			
(92 plus) A			
(81-91) B			
(69-80) C		76	81
(55-68) D			
(39-54) E			
(21-38) F			
(1-20) G			
Not energy efficient - higher running costs			
England & Wales		EU Directive 2002/91/EC	

Environmental Impact (CO ₂) Rating		Current	Potential
Very environmentally friendly - lower CO ₂ emissions			
(92 plus) A			
(81-91) B			
(69-80) C			
(55-68) D			
(39-54) E			
(21-38) F			
(1-20) G			
Not environmentally friendly - higher CO ₂ emissions			
England & Wales		EU Directive 2002/91/EC	

PCM endeavour to maintain accurate depictions of properties in Floor Plans and descriptions, however, these are intended only as a guide and purchasers must satisfy themselves by personal inspection. PCM have not tested any services, appliances, equipment or facilities, and nothing in these details should be deemed to be a statement that they are in good working order or that the property is in good structural condition or otherwise.